



THAKEHAM



The Petworth

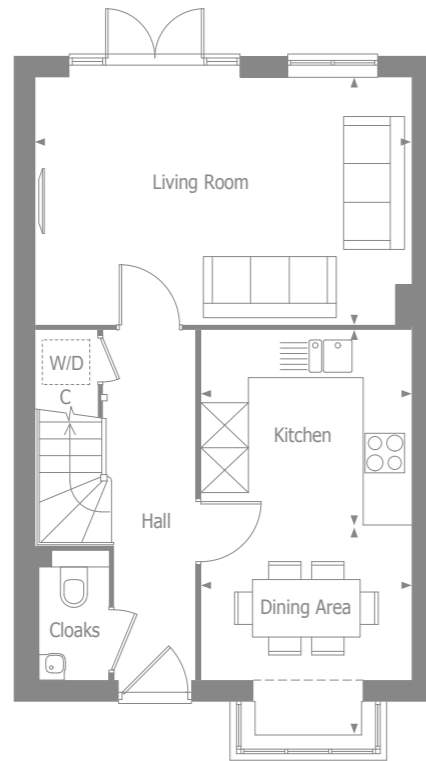
MANORWOOD

West Horsley, Surrey



THAKEHAM

GROUND FLOOR



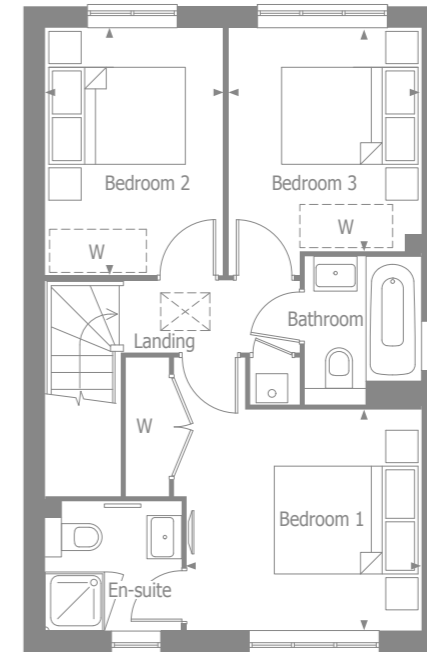
Kitchen	2.90m x 2.70m	9'5" x 8'10"
Dining Area*	2.90m x 2.95m	9'5" x 9'6"
Living Room	5.19m x 3.39m	17'0" x 11'1"

MANORWOOD  
West Horsley, Surrey



THAKEHAM

FIRST FLOOR



Bedroom 1	3.23m x 3.04m	10'7" x 10'0"
Bedroom 2	3.41m x 2.45m	11'2" x 8'0"
Bedroom 3	3.07m x 2.65m	10'1" x 8'8"

MANORWOOD  
West Horsley, Surrey

- W - Wardrobe
- C - Cupboard
- W - Space for wardrobe
- W/D - Provision for washer/dryer
- \* - Including bay



THAKEHAM

## THE PETWORTH SPECIFICATION

### BEAUTIFULLY DESIGNED KITCHENS

- Contemporary kitchen designs
- Soft close doors and drawers
- Laminate worktop and upstand
- One and half bowl stainless steel sink, with mono sink mixer tap by Vado
- Electrolux stainless steel single oven
- Induction hob with integrated extractor hood
- Energy efficient integrated Electrolux dishwasher
- Energy efficient integrated Electrolux 70/30 split fridge/freezer
- Provision for washer/dryer in hall cupboard

### STYLISH BATHROOMS

- Contemporary white sanitaryware, with chrome accessories by Vado
- Floor standing concealed cistern WC
- White steel enamel bath with over bath shower screen, shower in en-suite
- Wall mounted bath/shower mixer tap by Vado
- White summer use towel warmers with TRVs
- Saloni tiles to selected areas
- Polished edge mirror over basin in bathroom and en-suite

### INTERIOR FINISHES

- Amtico vinyl flooring to hall, cloakroom, kitchen/dining and bathrooms, with Cormar carpet in all remaining areas
- White painted flush doors, with contemporary ironmongery
- White painted staircase, newel posts and handrail
- Coordinated single paint finish on wall and satinwood paint finish on all internal joinery
- Telescopic aluminium loft ladder with handrail

### ECOLOGY

- Hedgehog holes through gravel boards in fencing, to provide routes for hedgehogs
- Hedgehog houses in communal landscaped areas

### SECURITY & PEACE OF MIND

- Mains fed smoke/heat detector, with battery backup
- Mains fed carbon monoxide detector, positioned adjacent to gas boiler
- 10 year NHBC Buildmark Warranty, including 2 year defect and emergency out of hours cover

### EXTERNAL

- Timber external entrance door with multi-point locking system
- UPVC double glazed windows with French doors to living room
- Closeboard fencing to rear gardens
- Landscaped front gardens and turfed rear gardens
- Paved paths and patio areas
- External tap in rear garden

### HEATING, ELECTRICAL & LIGHTING

- Energy efficient combination boiler
- Gas fired radiator heating throughout
- WiFi programmable heating controls
- LED downlights to hall, landing, kitchen, bathroom, en-suite and cloakroom with pendant lighting in remaining areas
- White sockets and switch plates in all areas (stainless steel in kitchen) with integrated USB charging in kitchen and bedrooms
- Multi-gang grid switch for kitchen appliances
- White shaver socket in all bathrooms
- Lighting to all external doors with internal switch
- Wired for terrestrial TV to hall media cupboard and digital aerial installation to loft space
- Wired for Sky Q to living room and all other rooms via Sky Q technology
- TV/satellite point in living room and secondary TV points in all bedrooms
- Electric car charging point
- Solar PV panels

MANORWOOD

West Horsley, Surrey